

CENTERPIECE OF THE MONTH

Ingredients:



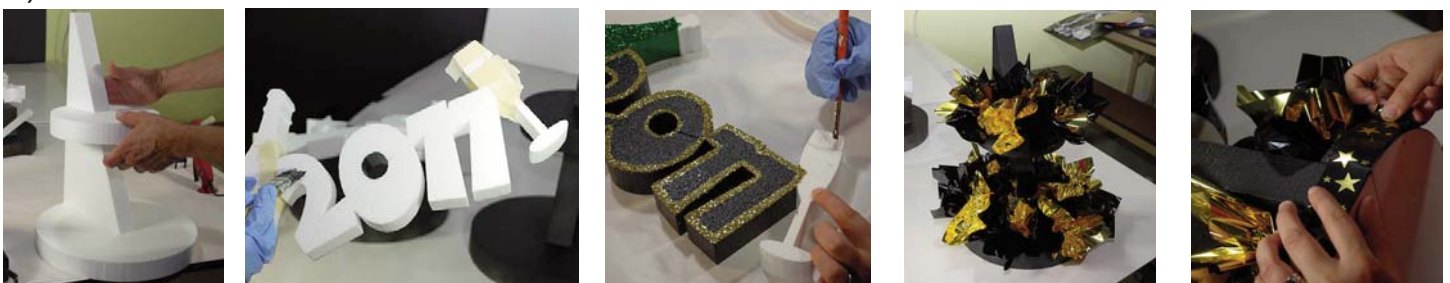
Description	Plu #	Qty Used	Cost in C/P	MIN/\$
CENTERPIECE BASE		1	4.75	3/\$14.25
2010 FOAM SHAPE 18"		1	2.99	3/\$8.97
DESIGN MASTER PAINT	388604	1	.50¢	4/\$16.00
9 x 9 met squares blk	311912	15	.90¢	200/\$11.00
9 x 9 met squares gld	311917	15	.90¢	200/\$11.00
Blk/Gld Star Ribbon	379612	1 yd	.34¢	25yd/\$8.60
Glitter (3 colors)	3056+color	less than 1lb	.50¢	1lb/\$6.22
Latex based Paint	Home Depot	Not Much	.25¢	
Gld puffy star ting	324117	6	2.16¢	10/\$3.62
Gld crackle ribbon	302717	3"	.08¢	24yd/\$5.95
Wht glow spray	497740	6	\$9.24	10/\$15.44

Estimated Cost	\$22.61	Estimated Cost w/o Glow Spray	\$13.37
----------------	----------------	-------------------------------	----------------

This Low Cost Centerpiece will dazzle your clients.

Equipment Needed (the cost of these items are NOT factored in the C/P costs)

- 1) Pick Machine & picks
- 2) Cool Glue Gun & Glue Sticks or Glue Skillet and glue cubes
- 3) Wire cutters 5³/₄"
- 4) Masking tape
- 5) Paint brush & Paint
- 6) Wooden Skewers

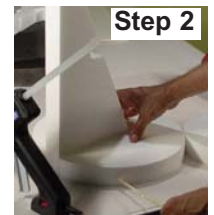


Instructions:

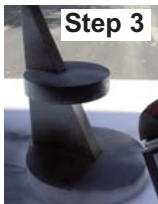
Step 1: Gather all the ingredients and tools: Prepare your work space and paint area, Always spray paint in a well ventilated area. Most of the ingredients can be substituted, based on your inventory and customers theme.



Step 2: Assemble the centerpiece base. The Foam base is in three pieces. For best fit you can use a cool glue gun, and a wooden skewer. Apply cool glue to the inside groove on the larger circle. Before the glue dries, insert the tower into the groove in the larger circle. For this centerpiece we inserted the tower with the tall end on the outside of the circle. You can insert it with the tall end on the inside of the circle to create a different look. Hold it until glue dries. Repeat the same step for the smaller circle. For additional support on the base, you can insert a wooden skewer through the base and tower. Do this by inserting the skewer through the back of the circle through the back of the tower. Pull the skewer out, and then cover it with cool glue, and insert it back into the hole.



Step 3: Spray paint the foam centerpiece base. We suggest using Design Master spray paint. Most Design Master spray paint can be used on foam. Lightly spray surface of the foam holding the can approximately 12" to 18" away from foam. Allow to dry. Re-spray lightly until desired color is achieved. A latex primer must be applied to use metallic colors. Always test paint on a scrap piece of foam to make sure you get the desired effect. Always spray paint in a well ventilated area. A mask is recommended.



Step 4: Finish the Foam 2011. We suggest using glitter and a latex based paint (you can get at Home Depot). Use the same color paint and glitter. Apply the paint with a brush or roller, then spill the glitter onto the wet paint. Lightly press the glitter into the wet paint. The paint will act as a glue. Shake off the excess glitter after the paint dries for re-use. Paint and glitter one section at a time, and allow the paint to dry before doing another section. You can finish one or both sides of the foam depending on how it will be displayed. To create the pinstripe effect, we first painted the foam piece in black. After it dried we painted the edge with a small paint brush and gold latex paint. While the painted pinstripe was wet, we poured gold glitter on the wet paint. We added gold crackle ribbon to the top of the bottle.



Step 5: Make 30 Foil Puffs. Take one 9 x 9 metallic square and pinch the center and pull the four corners forward. Insert the pinched middle section of the square and attach it to a metal pick with the pick machine. Open up the foil puff, before inserting in the foam. Evenly insert the picks in the foam circles to make the centerpiece look full. We used 30 foil puffs, but you can use more or less depending on your taste. You can dip the metal picks in cool glue before inserting into the foam for a more secure fit and safety.



